



**J/24 NORTH  
AMERICAN  
CHAMPIONSHIP**



## **2018 J/24 North American Championship**

*May 2-6, 2018*

**Hosted by: Charleston Yacht Club and the International J/24 Class Association**



**Charleston, SC - USA**

**[www.charlestonyachtclub.com](http://www.charlestonyachtclub.com)**

### **Sailing Instructions**



#### **1. Rules**

- 1.1 The regatta will be governed by the rules as defined in the Racing Rules of Sailing (RRS).
- 1.2 The following prescriptions of the US Sailing national authority will apply:
  - the prescription to RRS 61.4 (no fees for protests),
  - Appendix R in its entirety (appeal procedures),
  - the prescription to RRS 67 (results of jury are not liability decisions),
  - the prescription to RRS 70.5(a) (US Sailing's right to approve whether jury decisions may be appealed),
  - the prescription to RRS 76.1 (non-discrimination),
  - the prescription to RRS 82 (Indemnification or Hold Harmless Agreement)
- 1.3 The Regatta Regulations of the International J/24 Class Association (IJCA) will apply.
- 1.4 Notwithstanding the preamble to Part 4 rules, RRS 41 shall apply from the time a boat leaves her mooring for the first race of each day until she returns to her mooring after racing. If racing is postponed or abandoned and boats are sent to shore, RRS 41 restrictions are suspended until she leaves her mooring again.
- 1.5 Bow numbers will be assigned to each boat and will be used as identification for the boat during the regatta. Bow numbers shall be applied to both sides of the boat in accordance with the instructions supplied in Sailing Instructions (SIs) Attachment #2 and shall remain affixed until after a boat hauls out at the end of the regatta.

- 1.6 In accordance with RRS G3, a boat chartered or loaned for this event may carry national letters or a sail number in contravention of the class rules.
- 1.7 If there is a conflict between languages, the English text will take precedence.
- 1.8 RRS 44.3(a) is changed by adding the following after the last sentence of RR44.3(a) “the yellow flag (code flag “I” is acceptable) used by a boat taking a scoring penalty shall have a hoist of not less than 150mm and a fly of not less than 200mm.”
- 1.9 RRS 61.1(a) is changed by adding the following after the last sentence of RRS 61.1(a) “the red flag displayed by a protesting boat shall have a hoist of not less than 150mm and a fly of not less than 200mm.”
- 1.10 Appendix T (Arbitration) will be used for this event.
- 1.11 Class rule C.2.1(b) is replaced with class rule J.4.3 that allows limited crew substitution.
- 1.12 If there is a conflict between the Notice of Race (NOR) and these SIs, the SIs will take precedence. This changes RRS 63.7.

## **2. Notices to Competitors:**

- 2.1 Notices to competitors will be posted on the official notice board located in the window of the Jury Room at the Charleston Yacht Club.
- 2.2 Any questions regarding these SIs shall be submitted in writing to the Jury desk. The questions and any answers will be posted on the official notice board as soon as possible.

## **3. Changes to Sailing Instructions:**

- 3.1 Any change to the SIs will be posted before 0830 on the day it will take effect, except that any change to the schedule of races will be posted by 2000 on the day before it will take effect.

## **4. Signals Made Ashore:**

- 4.1 Signals made ashore will be made at the Charleston Yacht Club flag pole which is located at the upstairs deck area on the water side of ChYC.
- 4.2 When flag AP is displayed ashore, ‘1 minute’ is replaced with ‘not less than 60 minutes’ in the race signal AP.

## 5. Schedule of Races:

### 5.1 Schedule

Day	Date	Time	Event/ Activity
Wednesday	May 02	1000 - 2000	Registration/Weigh-in/Measurement
Thursday	May 03	1000 - 2000	Registration/Weigh-in/Measurement
		1500	Practice race
		1900	All boats afloat
		1930	Slippers Meeting
Friday	May 04	0900	Competitors meeting
		0900 - 0930	Crew Weigh-in*
		1100	Warning for First Race of the Day
Saturday	May 05	0900	Competitors meeting
		0900 - 0930	Crew Weigh-in*
		1100	Warning for First Race of the Day
Sunday	May 06	0900	Competitors meeting
		0900 - 0930	Crew Weigh-in*
		1100	Warning for First Race of the Day
		1430	No warning signal after 1430 Awards Local boats haul out last

\*Crew Weigh-in for approved substitutions

5.2 Ten (10) races are scheduled over three (3) consecutive days, no more than four (4) races per day.

## 6. Class Flag:

6.1 The J/24 Class Flag (Blue insignia on a white background) shall be used in accordance with RRS 26.

## 7. Racing Area:

7.1 Attachment #3 shows the location of the racing area in Charleston Harbor.

## 8. Courses:

8.1 Courses will be windward/leeward with 5 legs (course 5) or four legs (course 4).

8.2 The diagrams in Attachment #4 show the courses.

8.3 No later than the warning signal, the Race Committee (RC) signal boat will display the course designator, the approximate compass bearing and the distance of the first leg. The RC will also broadcast this information. The following sentence changes RRS 62.1(a) by adding "Failure to broadcast or to receive by radio this information shall not constitute grounds for granting redress."

- 8.4 An offset mark (designated mark 1a) will be used in conjunction with mark 1. The offset mark will be placed to the left of the weather mark (looking up wind) at approximately a right angle to the weather leg and approximately 8 - 10 boat lengths to port of mark 1.
- 8.5 Mark 2 will be a gate consisting of two marks (mark 2P and mark 2S). If a mark of the gate is not present and there is no M Flag displayed, the remaining mark shall be rounded to port. Except when there is a change of course, the gate will be positioned approximately to windward of the RC signal boat at a distance to the discretion of the RC. The gate may be laid after the starting signal.
- 8.6 No 5-leg course will be shortened to less than four legs in length, and no 4-leg course will be shortened to less than three legs in length. For purpose of this SI only, the distance between mark 1 and the offset mark will not be regarded as a leg of the course. This changes RRS 33.

## **9. Marks:**

- 9.1 Mark 1 will be an orange tetrahedron, mark 1a will be a white ball, marks 2P and 2S will be orange tetrahedrons.
- 9.2 A new mark 1, when used in accordance with SI 12, will be a yellow tetrahedron and will not have an associated mark 1a.
- 9.3 The starting marks will be race committee boats at each end of the starting line.
- 9.4 The finishing marks will be race committee boats at each end of the finish line or a race committee boat and an orange ball.

## **10. Areas That Are Obstructions:**

- 10.1 No areas are designated as obstructions.

## **11. Start:**

- 11.1 Races will be started using RRS 26.
- 11.2 The starting line will be between staffs displaying orange flags on the starting marks.
- 11.3 A boat starting later than 10 minutes after her starting signal will be scored Did Not Start without a hearing. This changes RRS 63.1, A4 and A5.
- 11.4 RC may broadcast starting information, countdowns and the bow numbers of any boats OCS on the VHF channel designated in the Radio Communication portion of these SIs. Failure to make or receive such broadcasts or the order of transmission shall not be grounds for redress. This change is added to the end of RRS 62.1(a).

## **12. Change of the Next Leg of the Course:**

- 12.1 A course change to the next leg of the course will be signaled according to RRS 33 using red and green flags and + and - boards. This changes RRS 33 (a)(2)

- 12.2 To change the next leg of the course, the RC will lay a new mark (or move the finishing line) and remove the original mark as soon as practicable. When in a subsequent change a new mark is replaced, it will be replaced by an original mark.
- 12.3 Except at a gate, boats shall pass between the RC boat signaling the change of the next leg and the nearby mark, leaving the mark to port and the RC boat to starboard.

### 13. The Finish:

- 13.1 The finishing line will be between staffs displaying orange flags on the finishing marks or a staff displaying an orange flag on a finishing mark and an orange ball.
- 13.2 If the RC intends to **not** start another race on the same day, it will display code flag AP over A (with no sound) while the boats are finishing.

### 14. Penalty System:

- 14.1 RRS 44.1 (main body) and 44.2 (turns penalties) are not in use for this regatta. RRS 44.1(a) and 44.1(b) continue to apply. The Scoring Penalty, RRS 44.3, will apply, with penalties as modified by the IJCA table below).

<b>Action\Penalty</b>	<b>10 %</b>	<b>20 %</b>	<b>25 %</b>	<b>30 %</b>
Touching a mark	<b>X</b>			
Breach of a part 2 rule ("right of way, room")	<b>X</b>			
Breach of a part 2 rule ("right of way, room") <b>within the zone</b>		<b>X</b>		
After Race Scoring Penalty for touching a mark		<b>X</b>		
After Race Scoring Penalty for a breach of a part 2 rule ("right of way, room")		<b>X</b>		
After Race Scoring Penalty for a breach of a part 2 rule ("right of way, room") <b>within the zone</b>			<b>X</b>	
If one of the above After Race Scoring penalties is taken after the protest time limit				<b>X</b>
If taken as the result of an arbitration				<b>X</b>
<b><u>Penalties imposed by the Race Committee or Int. Jury without a hearing: These modify RRS 63.1</u></b>				
If a boat fails to check in before racing (SI 18.1) <b>(RC)</b>	<b>X</b>			
If some, but not all requirements of a properly taken Scoring Penalty are met <b>(Jury)</b>				<b>X</b>

- 14.2 RRS 44.3(c) is modified as follows: The race score for a boat that takes a Scoring Penalty shall be the score she would have received without that penalty, made worse by the penalty number. The penalty number shall be calculated by applying the scoring penalty percentage, shown in the table above, that best suits her situation against the number of boats competing and rounding to the nearest whole number (rounding 0.5 upward). However, she shall not be scored worse than DNF. The scores of other boats shall not be changed by application of these penalties; therefore, two boats may receive the same score.
- 14.3 The reporting requirements of RRS 44.3(b) may be satisfied by contacting the RC by VHF radio channel to be identified in SI 27, **Radio Communication**. Additionally, a boat accepting a Scoring Penalty shall file a "Scoring Penalty Acceptance Form" that is available at the Jury desk. The RC will post a list of boats that have properly accepted a Scoring Penalty on the Official Notice Board.
- 14.4 After Race Scoring Penalties may be taken by filing a "Scoring Penalty Acceptance Form", available at the Jury desk, prior to the start of a hearing involving the incident. Timing of the filing, either within or after the protest time limit, will affect the penalty as shown in the table.
- 14.5 Appendix T (Arbitration) may be used prior to the protest hearing for incidents involving the RRS Part 2 or RRS 31. Penalties accepted in arbitration shall be as shown in the table.
- 14.6 Other penalties as per RRS 64.1 apply for breaking some IJCA rules. See Attachment #1.

## **15. Time Limits:**

- 15.1 Boats failing to finish within 15 minutes (that do not subsequently retire or receive a disqualification or redress) after the first boat sails the course and finishes will be scored TLE (Time Limit Expired) by the RC without a hearing. TLE will be added to the list in RRS A11. This changes RRS A3 and A5..
- 15.2 The RC will lower the blue finish flag with a long sound when the finishing window is closed.

## **16. Protests and Requests for Redress:**

- 16.1 Protest forms are available at the Jury desk. Protests and requests for redress or reopening shall be delivered there within the appropriate time limit.
- 16.2 The protest time limit is 60 minutes from the time the RC signal boat docks.
- 16.3 The RC will post a list of penalties being assigned by the RC or Jury prior to the end of the protest time limit. The deadline for requests for redress based on these assigned penalties will be either 30 minutes after posting or the protest time limit, whichever is later.
- 16.4 Notices will be posted no later than 30 minutes after the protest time limit to inform competitors of a hearing in which they are parties or named as witnesses. Hearings will be held in the ChYC Jr. Room, located on the first floor of the yacht club, beginning at the time posted.

- 16.5 Breaches of instructions 5, 11.3, 18, 21, 23, 24, 25 and 26 will not be grounds for a protest by a boat. This changes rule 60.1(a). Penalties for these breaches other than 11.3 may be less than disqualification if the Jury so decides.
- 16.6 On the last scheduled day of racing, a request for redress based on a Jury decision shall be delivered no later than 30 minutes after the decision was posted. This change is added to RRS 62.2 after the last sentence.
- 16.7 Decisions of the Jury will be final as provided in RRS 70.5.

## **17. Scoring:**

- 17.1 Four races are required to be completed to constitute a championship.
- 17.2 When fewer than five races have been completed, a boat's series score will be the total of her race scores. When five or more races have been completed, a boat's series score will be the total of her race scores, excluding her worst score.
- 17.3 A TLE score shall be two more points than the number of boats that have finished within the time limit specified in SI section 15. This change is added to RRS A4 and A5.

## **18. Safety Regulations:**

- 18.1 Before their warning signal of the first race each day, each boat shall sail on starboard tack past the stern of a designated RC boat displaying flag L and hail her bow number until acknowledged by the RC repeating her bow number.
- 18.2 A boat that retires from a race or does not intend to compete in a race or returns to the racing area shall notify the RC as soon as possible.

## **19. Replacement of Crew or Equipment:**

- 19.1 The number of crew shall not change during the regatta.
- 19.2 Substitution of damaged or lost equipment will not be allowed unless authorized by the RC. Requests for substitution shall be made to the RC at the first reasonable opportunity. Substitution of an approved spinnaker poles or rudders with spares that have been measured and are carried aboard may be done with written notification after returning to the dock for the day.

## **20. Equipment and Measurement Checks:**

- 20.1 A boat or equipment may be inspected at any time for compliance with the class rules and the SIs. On the water, a boat may be instructed by the Technical Committee to proceed immediately to a designated area for inspection.

## **21. Event Advertising and Bow Numbers:**

- 21.1 Boats shall display bow numbers that are supplied by the Organizing Authority (OA). Such bow numbers shall be installed according to SI Attachment #2 and shall remain in place for the duration of the regatta.

- 21.2 Boats shall display event advertising that is supplied by the OA. Such advertising shall be installed according to the instructions supplied with them and shall remain in place for the duration of the regatta.

## **22. Support Boats:**

- 22.1 Support boats shall comply with SI 1.4.
- 22.2 Support boats shall register during scheduled registration, declaring to which boat or boats they are attached. They will be required to display an identification flag supplied by the OA.
- 22.3 Support boats shall remain at a minimum of 150m from the race course from the Preparatory signal until all boats have finished or retired or the RC has signaled a postponement, general recall or abandonment.
- 22.4 Failure of a support boat to comply with SI 22 shall be considered a breach of RRS 3, acceptance of the rules, by the boats associated with the support boat and is subject to protest. Any penalty applied to the boats associated with the support boat shall be at the discretion of the Jury and may not be excluded from their score.
- 22.5 Support boat drivers shall have valid third-party liability insurance in the same amount as is required of each participating boat and provide proof of that insurance at registration.

## **23. Trash Handling:**

- 23.1 Trash shall be held for proper disposal ashore or may be placed on official boats if such facilities are available.

## **24. Afloat and Haul-out Restrictions:**

- 24.1 Boats shall be afloat by 1800 Thursday May 3<sup>rd</sup> and shall not be hauled out during the regatta except with, and according to the terms of prior written permission of the RC or Technical Committee. This includes rudders.

## **25. Diving Equipment, Plastic Pools and Other Prohibited Actions:**

- 25.1 Underwater breathing apparatus and plastic pools or their equivalent shall not be used between the time the boat is afloat and the end of the regatta. The hull may be cleaned at any time by swimming or keelhauling using ropes, cloth or other equipment designed for that use.
- 25.2 Careening by any means for the purpose of cleaning or inspecting the hull is prohibited during the regatta.
- 25.3 The use of dehumidifiers is prohibited after 1900 hrs Thursday May 3<sup>rd</sup>.

## **26. Radio Communication:**

- 26.1 Except in an emergency, a boat shall not make voice or data transmissions and shall not receive voice or data communication that is not available to all boats. This shall apply from the time she leaves her mooring for the first race of the day until racing for the day is complete.



26.2 The RC may choose to make VHF radio communications to the fleet on channel 74. Each boat shall have a VHF radio on board capable of receiving these communications.

26.3 Protests shall be communicated to the RC on VHF 69. This changes RRS 61.1(a)

## **27. Prizes:**

27.1 Prizes will be awarded to at least the top 8 boats.

27.2 The top-finishing, not previously qualified primary driver who is a current member of any NJCA as recognized by the International J/24 Class and meets all other eligibility requirements will earn a berth to the 2019 J/24 World Championship in Miami, FL USA. This berth is allocated by the International J/24 Class and is available to sailors from any country. Additionally the top four USA driver will earn berths to the 2019 J/24 World Championship in Miami, FL USA.

27.3 Prizes will also be awarded to the top all Women and Youth teams.

## **28. Disclaimer of Liability:**

28.1 Competitors participate in the regatta entirely at their own risk. See RRS 4, Decision to Race. The OA will not accept any liability for material damage or personal injury or death sustained in conjunction with or prior to, during or after the regatta.

28.2 All competitors will be required to sign a Competitor Disclaimer of Liability form to be provided in the registration package.

## **29. Insurance:**

29.1 Each participating boat and their support boat shall be insured with valid third party insurance with a minimum coverage of \$300,000 USD per incident or the equivalent.

## 2018 J/24 North Americans – SI ATTACHMENT #1

### Alternative Penalties for Breaking Some Class Rules

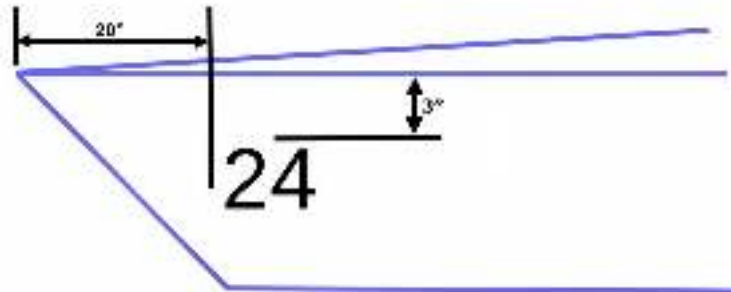
The following penalties for a boat that breaks these listed class rules would be in place of disqualification. All of these scoring penalties shall be calculated according to RRS 44.3(c). If a boat receives one of the below penalties, the protest decision shall include whether the same penalty will be applied to other races in which the same infringement likely occurred.

<b>Class Rule</b>	<b>Infringement</b>	<b>Scoring Penalty</b>
B.3	Complete Measurement Certificate, including the Inventory of Required and Optional Equipment is not on board	20%
C.4	Advertising does not conform to World Sailing (Reg 20) standards	20%
C.9.4 & C.9.5	Mainsail is set outside of the limit marks	20%
C.5.1(a)(1)	Bailing bucket (9 liter min. with lanyard) is not on board	20%
C.7.2(a)(9)	Approved compass device is not present or not functional	20%
C.5.1(a)(4)	Throwable lifesaving device with attached sea anchor is not on deck, ready for use	20%
C.5.1(a)(5)	First aid kit is not on board	20%
C.5.1(b)(1) C.5.1(a)(2) C.5.2(a) (10)	Any of anchors(s), outboard motor/engine, battery or engine fuel container(s) are not in their proper location and secured against movement	20%
C.7.3(a) (11)	Elastic (shock) cord is used in the standing or running rigging where it is not specifically allowed	20%
C.5.3	Stowage of equipment other than unbagged sails on the cabin sole	20%
	Removal of the rudder without approval from the water when the Sailing Instructions stipulate that the boat shall remain afloat for the duration of the regatta	20%

## 2018 J/24 North Americans – SI ATTACHMENT #2

### BOW NUMBERS

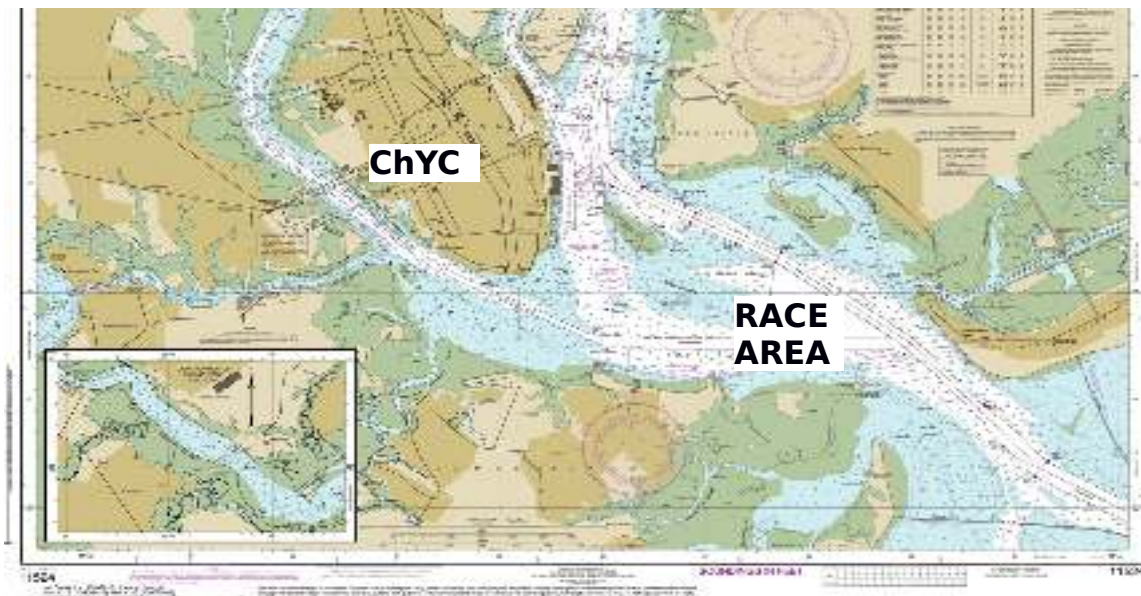
Position bow numbers on your boat as shown in the figure below.



(not to scale)

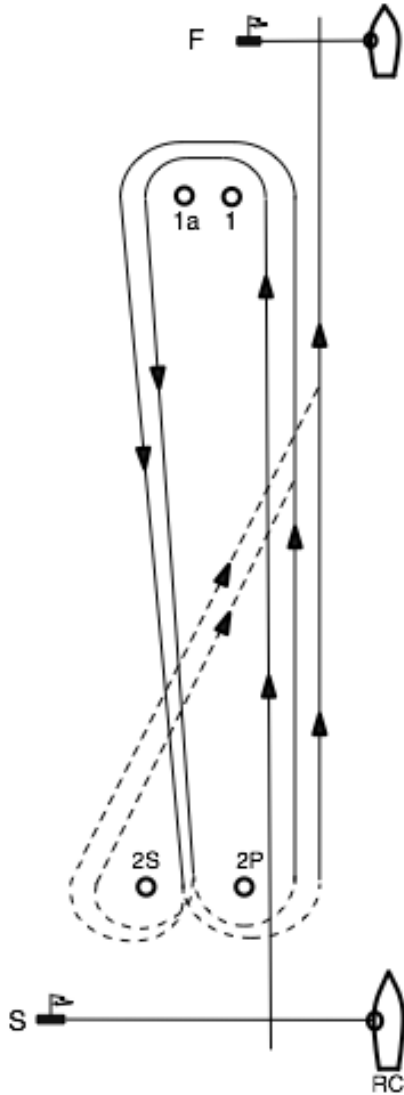
Bow number location dimensions are approximate.

## 2018 J/24 North Americans – SI ATTACHMENT #3

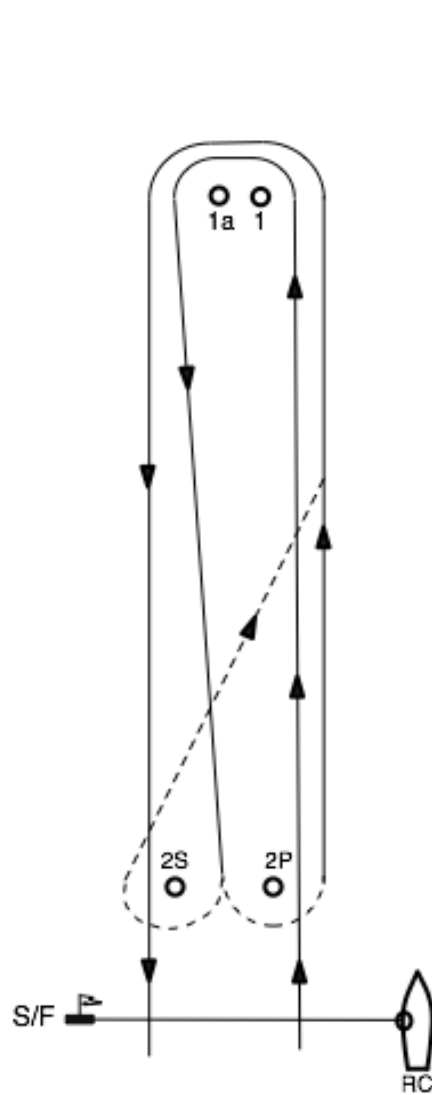


# 2018 J/24 North Americans – SI ATTACHMENT #4

**COURSE 5**  
START - 1 - 1a - 2S/2P - 1 - 1a - 2S/2P - FINISH



**COURSE 4**  
START - 1 - 1a - 2S/2P - 1 - 1a - FINISH



NOTE: If the gate (mark 2p and mark 2s) is not present, mark 2 will be set in place of marks 2p and 2s, and shall be rounded to port. 2S/2P in the rounding sequence for the courses is replaced by 2. The area between mark 1 and mark 1a is not considered a leg to be counted in the course description above.